

A satellite image of a hurricane, showing a well-defined eye and spiral cloud bands, is positioned on the left side of the slide. The text 'KCRW' is in a teal, italicized sans-serif font, and 'Hurrevac Packet' is in a bold, black sans-serif font. A solid teal horizontal bar is located below the title.

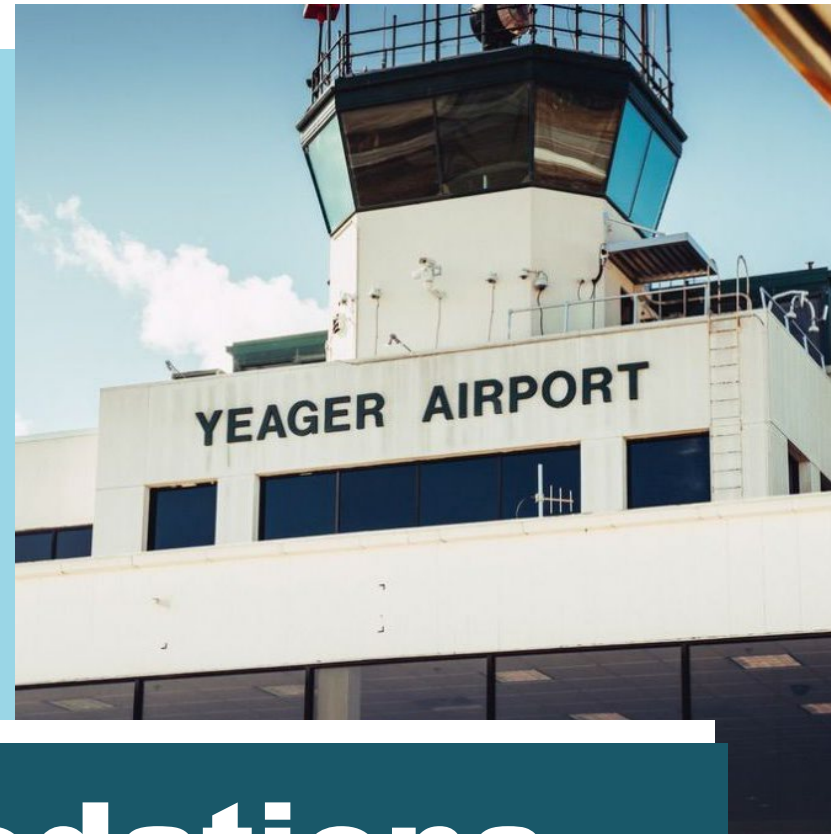
KCRW **Hurrevac Packet**

Capital Jet Center with
Yeager Airport in Charleston,
WV

Table of Contents

- Accommodations
- Airport Diagram
- Parking/Space
- Hot Fuel
- Local Frequencies
- Training Opportunities
- Hotel/Rental Information
- Food Accommodations

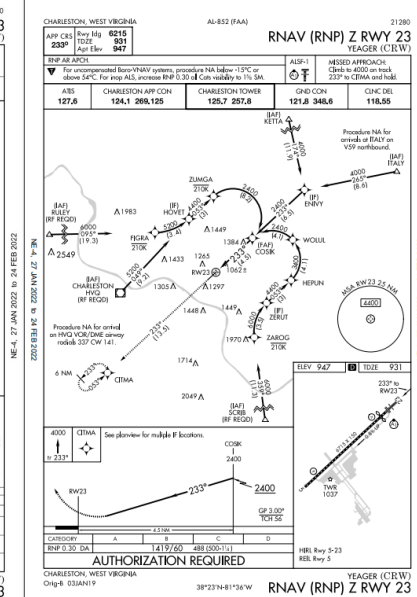
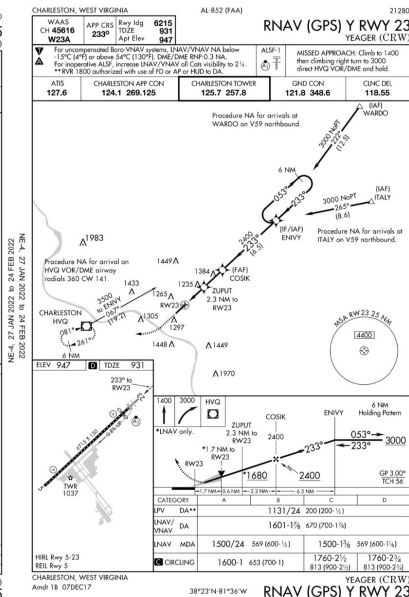
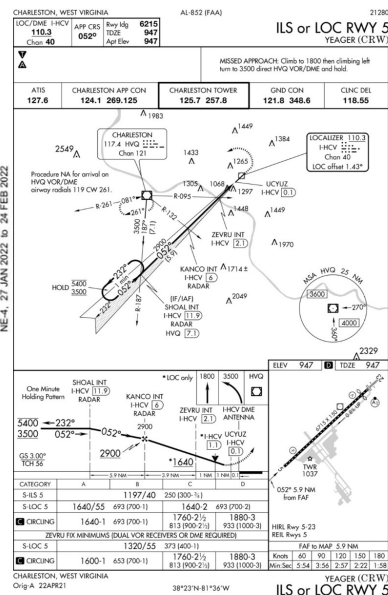
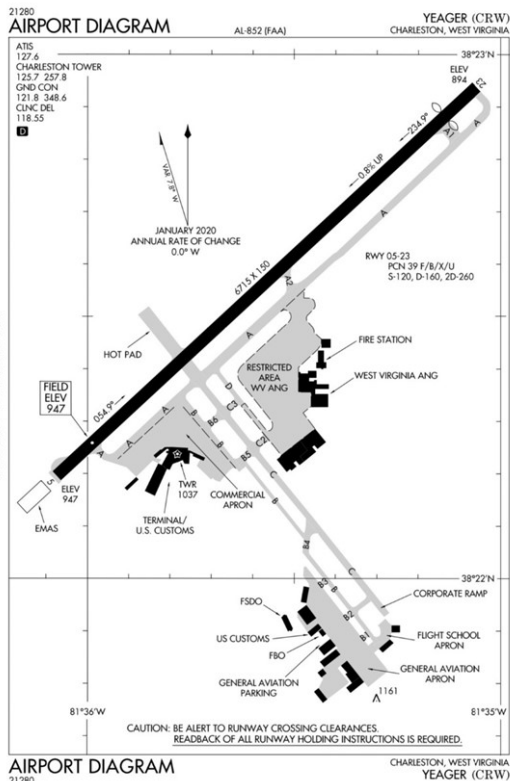
- Woody Williams Military Building offers space separate from general aviation with classrooms, lounge, kitchen, and separate bathrooms.
- Ramp Vehicles, Crew Cars, hangar space, tow bars and tugs, and other equipment we can accommodate
- Contact Fuel and Hot Fuel
- Multiple instrument approaches
- No noise Abatement, no PPR required
- Just two minutes from downtown Charleston

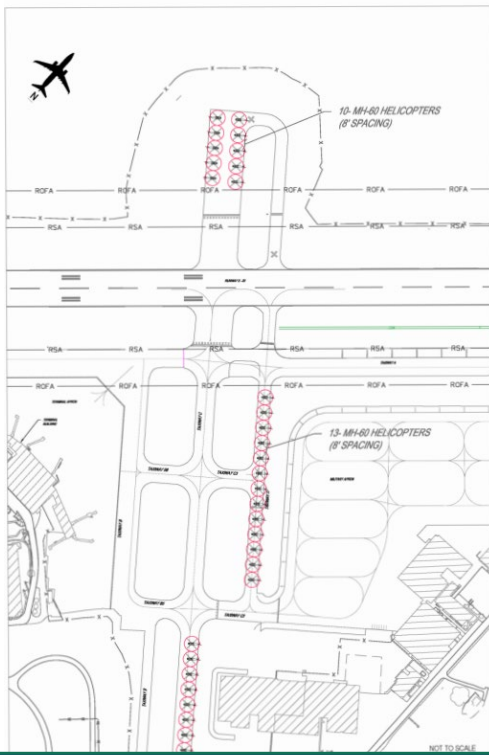


Accommodations

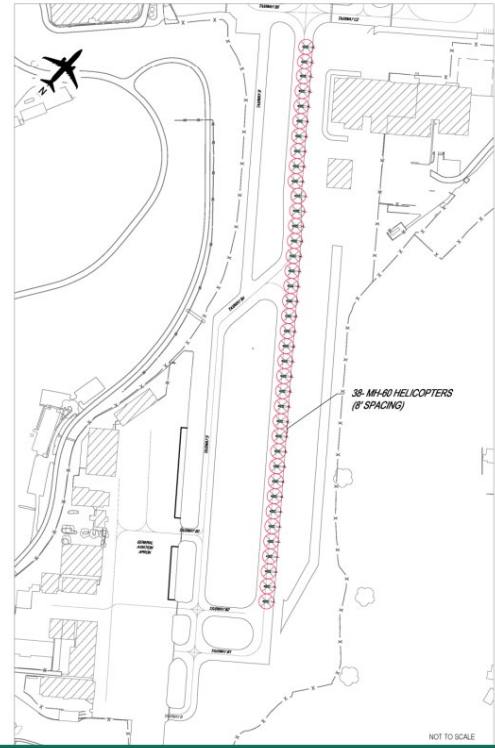
Airport Diagram

Approach Plates

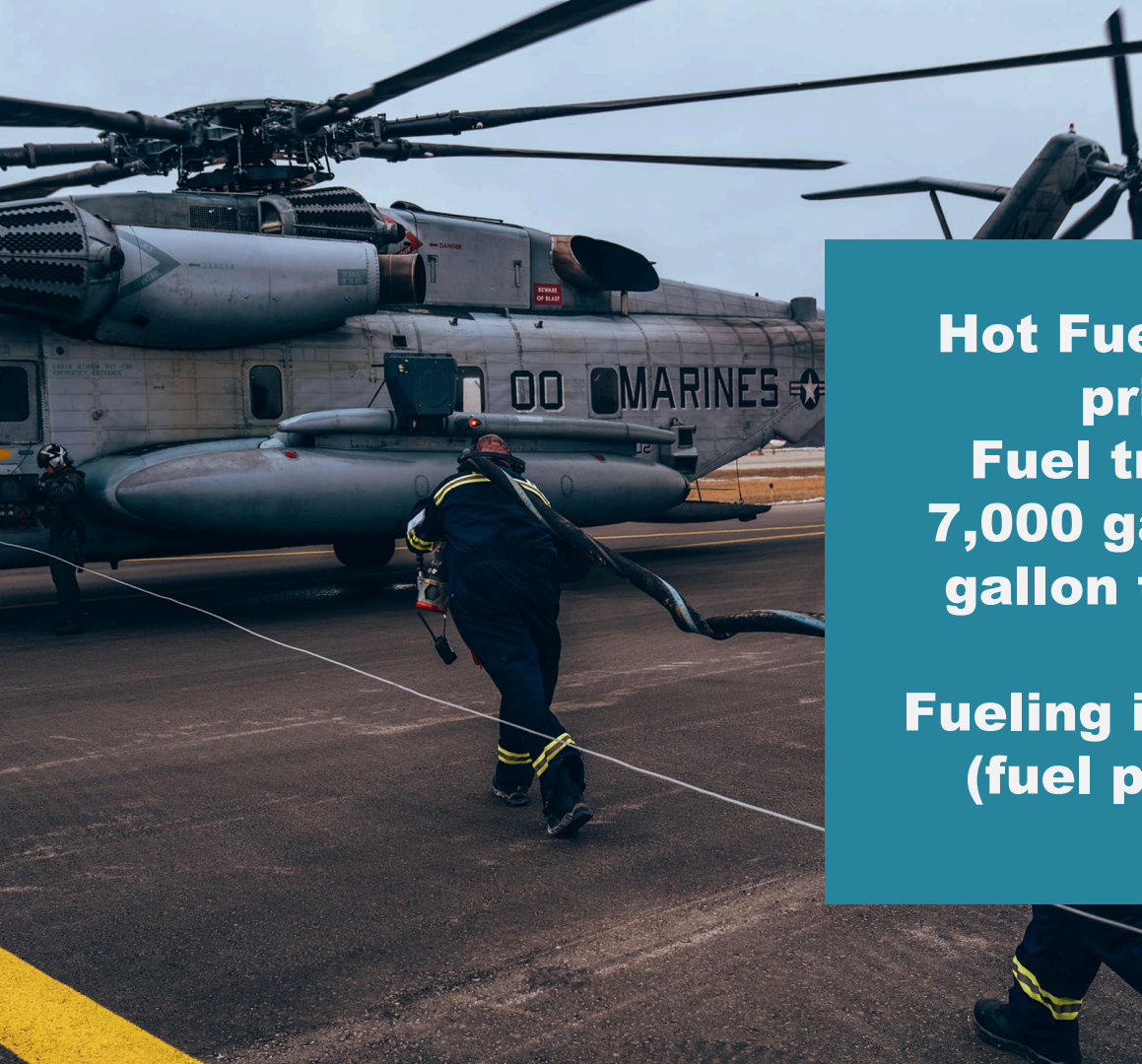




We have the ability to close taxi ways to ensure space of different aircraft and multitudes of aircrafts.



Parking Diagram



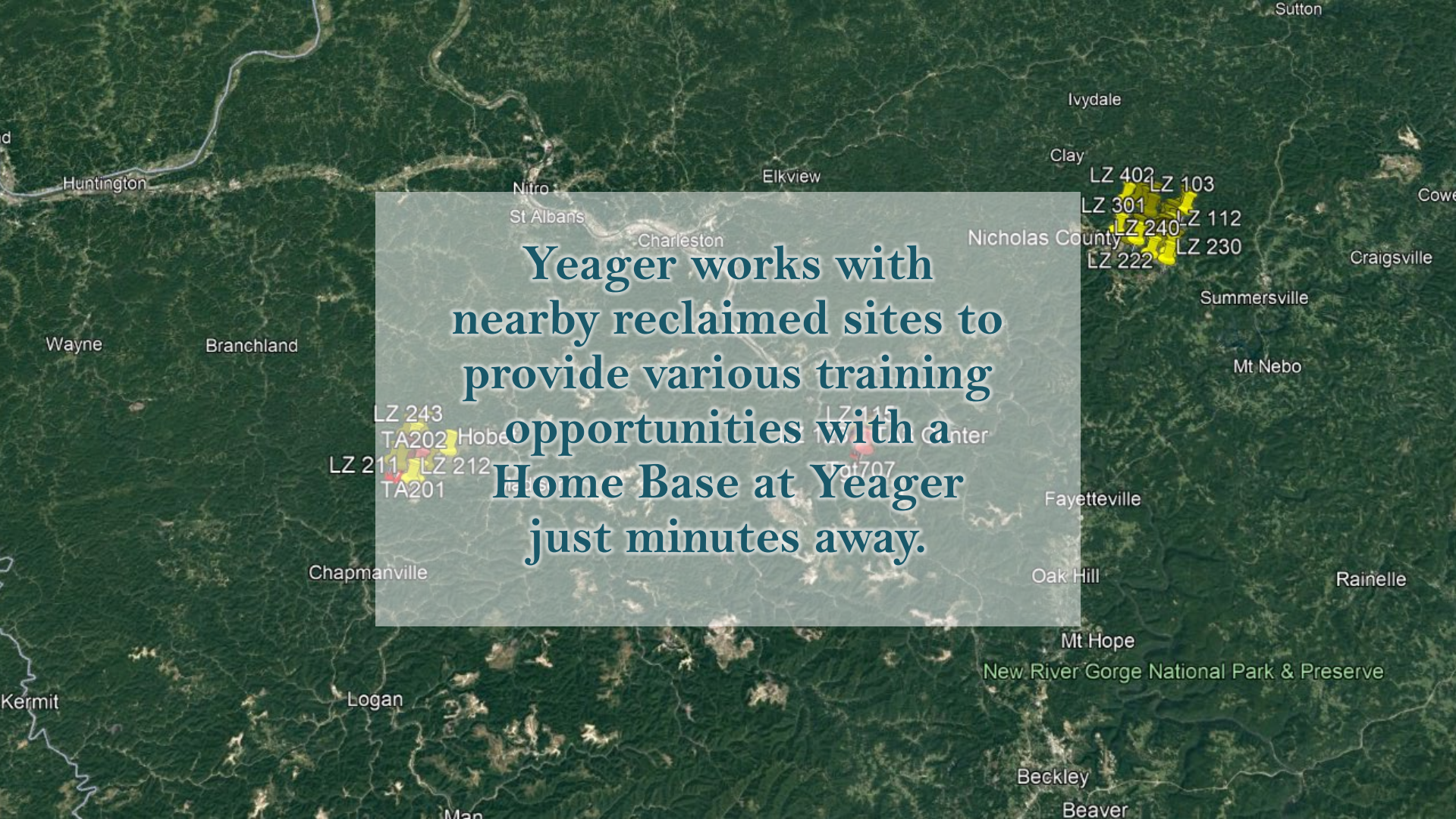
Hot Fueling is available with prior coordination.

Fuel truck capacities: one 7,000 gallon truck, two 5,000 gallon truck , and two 3,000 gallon truck.

Fueling in about 15-20 minutes (fuel pumps at 160gal/min)

Local Frequencies

Agency	Frequency
KCRW Approach	119.2
KCRW Tower	125.7/348.6
KCRW C/D	118.55
Capital Jet Center	122.95

An aerial photograph of a region in West Virginia, showing a mix of green forested hills and some cleared areas. A semi-transparent grey rectangle is centered over the map, containing white text. Various towns and locations are labeled in white text across the map, including Huntington, Nitro, Elkview, Clay, Ivydale, St Albans, Charleston, Nicholas County, Summersville, Mt Nebo, Fayetteville, Oak Hill, Rainelle, Mt Hope, New River Gorge National Park & Preserve, Beckley, Beaver, Logan, Chapmanville, Wayne, Branchland, and Kermit. Several landing zones (LZ) and training areas (TA) are marked with yellow and red dots and labeled: LZ 243, TA202, LZ 211, LZ 212, TA201, LZ 115, LZ 112, LZ 240, LZ 230, LZ 222, LZ 402, and LZ 103. The text overlay reads: "Yeager works with nearby reclaimed sites to provide various training opportunities with a Home Base at Yeager just minutes away."

Yeager works with
nearby reclaimed sites to
provide various training
opportunities with a
Home Base at Yeager
just minutes away.

HOTELS AND RENTALS

Charleston offers multiple hotels with 800+ possible rooms. Rental cars can be provided from several different rental companies and brought right to our FBO!



MARRIOTT



Holiday Inn

FOUR
POINTS
BY SHERATON

AVIS
Budget

enterprise

Hertz

National
Car Rental

FOOD with Home Base

Not only is Downtown Charleston just minutes away with a large variety of foods, but Home Base has a Military Menu coming straight from our restaurant at Yeager Airport to bring you our WV favorites!



HOME  BASE

AT YEAGER AIRPORT

Contact Information



Samatha Watson | Military Services and Special Services Specialist

304-590-2177

CJCMilitary@gmail.com

S_Watson@YeagerAirport.com

YeagerAirport.com/Military